

## Luminaire Property

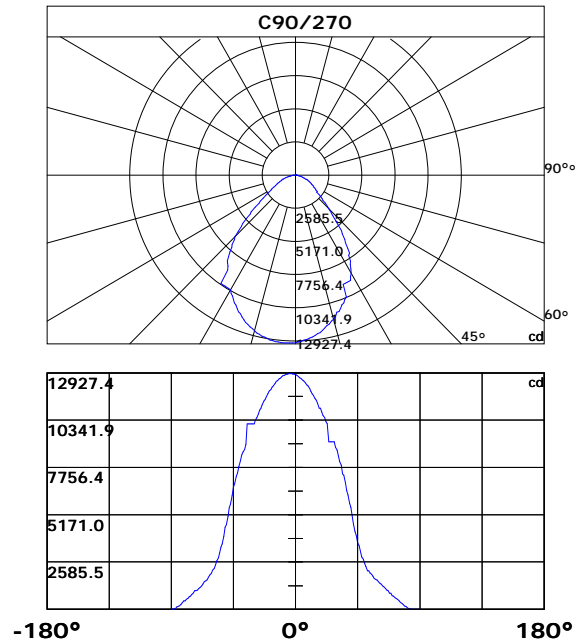
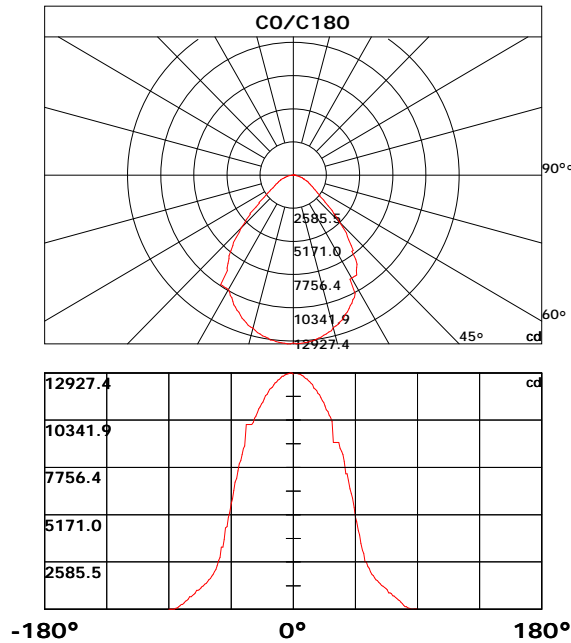
Luminaire Description: UFO-200W  
 Luminaire Categorie:  
 Lamp Categorie:  
 Lamp Description:  
 Number of Lamp:  
 Lamp Lumens(lm): 23008.14  
 Luminous Length(m):  
 Luminous Width(m):  
 Luminous Height(m):

Voltage: 222.7 V  
 Current: 0.937 A  
 Power: 202.67 W  
 Power Factor: 0.971  
 Test Lab: HuiPu-lab  
 Photometric Type: Type C

## Photometric Results

CIE Class: Direct  
 Measurement Flux: 23008.14 lm  
 Efficiency: 113.5251 lm/W  
 Central Intensity: 12856.14cd  
 Max. Intensity: 12927.385cd  
 Field Angle(10%Imax): 128.96, 128.45

Max.Intensity Angle: C:180.0 G:1.0  
 Beam Angle(50%Imax): 82.78, 79.28  
 Luminaire Efficacy Rating(LER) : 100.00%  
 Upward Ratio: 0.0%  
 Downward Ratio: 100.0%



## Light intensity data Unit[cd]

C\G	G0.0	G1.0	G2.0	G3.0	G4.0	G5.0	G6.0	G7.0	G8.0	G9.0
C0.0	12856.1	12923.8	12916.7	12891.6	12866.6	12845.1	12795.1	12762.9	12698.5	12630.6
C30.0	12856.1	12752.2	12712.8	12691.4	12641.3	12609.1	12541.2	12462.5	12423.2	12333.8
C60.0	12856.1	12809.4	12766.5	12723.6	12702.1	12637.7	12598.4	12526.9	12476.8	12380.3
C90.0	12856.1	12787.9	12727.1	12662.8	12623.4	12534.0	12487.5	12383.8	12269.4	12212.2
C120.0	12856.1	12859.4	12845.1	12802.2	12741.4	12705.7	12627.0	12584.1	12484.0	12376.7
C150.0	12856.1	12848.7	12805.8	12777.2	12716.4	12677.1	12602.0	12512.6	12462.5	12355.2
C180.0	12856.1	12927.4	12920.2	12902.4	12873.7	12855.9	12813.0	12755.7	12755.7	12648.5
C210.0	12856.1	12777.2	12780.8	12784.3	12770.0	12748.6	12737.9	12691.4	12648.5	12616.3
C240.0	12856.1	12834.4	12830.8	12827.3	12813.0	12798.6	12762.9	12709.2	12648.5	12612.7
C270.0	12856.1	12845.1	12859.4	12877.3	12884.5	12877.3	12855.9	12848.7	12802.2	12777.2
C300.0	12856.1	12898.8	12905.9	12895.2	12891.6	12866.6	12845.1	12798.6	12773.6	12705.7
C330.0	12856.1	12902.4	12913.1	12916.7	12913.1	12909.5	12891.6	12859.4	12816.5	12795.1
C360.0	12856.1	12923.8	12916.7	12891.6	12866.6	12845.1	12795.1	12762.9	12698.5	12630.6
C\G	G10.0	G11.0	G12.0	G13.0	G14.0	G15.0	G16.0	G17.0	G18.0	G19.0
C0.0	12594.8	12494.7	12444.6	12337.3	12283.7	12094.2	12029.8	11961.9	11804.5	11729.4
C30.0	12283.7	12176.4	12065.6	12001.2	11872.5	11808.1	11668.6	11514.8	11443.3	11271.7
C60.0	12276.5	12215.8	12090.6	12026.2	11897.5	11758.0	11682.9	11529.2	11446.9	11289.6
C90.0	12072.7	11929.7	11775.9	11693.7	11529.2	11443.3	11268.1	10985.6	10985.6	10788.9
C120.0	12323.0	12205.0	12065.6	11997.6	11847.4	11697.2	11615.0	11446.9	11268.1	11178.7
C150.0	12301.6	12190.7	12069.1	12004.8	11861.7	11779.5	11625.7	11554.2	11393.3	11218.0
C180.0	12573.4	12530.4	12433.9	12380.3	12273.0	12151.4	12090.6	12022.6	11886.8	11747.3
C210.0	12548.3	12469.7	12423.2	12323.0	12222.9	12162.1	12040.5	11986.9	11851.0	11708.0
C240.0	12537.6	12487.5	12394.6	12287.3	12230.1	12112.0	11986.9	11915.4	11775.9	11700.8
C270.0	12716.4	12644.9	12602.0	12509.0	12462.5	12344.5	12226.5	12158.5	12019.1	11947.5
C300.0	12627.0	12584.1	12487.5	12433.9	12312.3	12183.6	12054.8	11979.7	11829.5	11754.4
C330.0	12734.3	12659.2	12627.0	12537.6	12433.9	12380.3	12326.6	12205.0	12076.3	11940.4
C360.0	12594.8	12494.7	12444.6	12337.3	12283.7	12094.2	12029.8	11961.9	11804.5	11729.4
C\G	G20.0	G21.0	G22.0	G23.0	G24.0	G25.0	G26.0	G27.0	G28.0	G29.0
C0.0	11561.3	11396.8	11300.3	11117.9	10917.7	10821.1	10613.7	10506.4	10277.5	9115.3
C30.0	11185.9	11007.1	10821.1	10624.4	10524.3	10306.1	10184.6	9015.2	9015.2	9015.2
C60.0	11117.9	11024.9	10842.6	10645.9	10545.7	10331.2	10216.7	10216.7	10216.7	10216.7
C90.0	10588.7	10484.9	10266.8	10152.4	9151.1	9151.1	9151.1	9151.1	9151.1	8865.0
C120.0	10992.7	10796.1	10695.9	10488.5	10384.8	10256.1	10163.1	10163.1	10163.1	10163.1
C150.0	11132.2	10946.3	10753.2	10649.4	10449.2	10223.9	10113.0	9097.4	9097.4	9097.4
C180.0	11672.2	11504.1	11328.9	11243.1	11060.7	10964.1	10760.3	10552.9	10445.6	10223.9
C210.0	11643.6	11489.8	11407.6	11235.9	11060.7	10971.3	10778.2	10778.2	10463.5	10256.1
C240.0	11543.5	11382.5	11293.1	11114.3	11024.9	10742.4	10742.4	10538.6	10313.3	10202.4
C270.0	11800.9	11632.9	11461.2	11375.4	11189.4	10996.3	10885.5	10678.1	10470.6	10366.9
C300.0	11586.4	11421.9	11328.9	11139.4	10953.4	10856.9	10656.6	10445.6	10338.3	10116.6
C330.0	11865.3	11715.1	11629.3	11547.0	11286.0	11193.0	11007.1	10910.5	10706.7	10499.3
C360.0	11561.3	11396.8	11300.3	11117.9	10917.7	10821.1	10613.7	10506.4	10277.5	9115.3

### Light intensity data Unit[cd]

C\G	G30.0	G31.0	G32.0	G33.0	G34.0	G35.0	G36.0	G37.0	G38.0	G39.0
C0.0	9115.3	9115.3	9115.3	9115.3	8807.8	8639.7	8450.2	8089.0	7416.7	7416.7
C30.0	9015.2	9015.2	8861.4	8536.0	8364.4	7999.6	7420.3	7395.3	6951.8	6726.5
C60.0	10216.7	9058.1	8754.1	8596.8	8260.7	8081.9	7702.8	7495.4	7073.4	6622.8
C90.0	8704.1	8385.8	8074.7	7878.0	7416.7	7320.2	6912.5	6479.8	6258.1	5800.3
C120.0	9143.9	9011.6	8722.0	8410.8	8249.9	7910.2	7731.4	7348.8	6933.9	6723.0
C150.0	9097.4	8954.4	8811.4	8478.8	8310.7	7960.3	7413.1	7388.1	6969.7	6748.0
C180.0	10109.5	10109.5	10109.5	10109.5	10109.5	8932.9	8789.9	8468.1	8139.1	7956.7
C210.0	10130.9	10130.9	10130.9	10130.9	10130.9	9122.5	8832.8	8686.2	8371.5	8035.4
C240.0	9090.3	9090.3	9090.3	9090.3	9090.3	8950.8	8800.6	8493.1	8167.7	7992.4
C270.0	10134.5	10134.5	10134.5	10134.5	10134.5	10134.5	9018.8	8739.8	8596.8	8446.6
C300.0	8972.3	8972.3	8972.3	8972.3	8972.3	8972.3	8679.0	8525.3	8210.6	7867.3
C330.0	10392.0	10170.3	10170.3	10170.3	10170.3	10170.3	10170.3	9011.6	8714.8	8385.8
C360.0	9115.3	9115.3	9115.3	9115.3	8807.8	8639.7	8450.2	8089.0	7416.7	7416.7
C\G	G40.0	G41.0	G42.0	G43.0	G44.0	G45.0	G46.0	G47.0	G48.0	G49.0
C0.0	7055.5	6579.9	6333.2	6079.3	5564.3	5049.4	4791.9	4302.0	4058.8	3619.0
C30.0	6247.3	5757.4	5507.1	5010.0	4738.3	4266.2	3829.9	3626.1	3254.9	3086.5
C60.0	6394.0	6157.9	5678.8	5196.0	4960.0	4502.2	4069.5	3862.1	3479.8	3282.8
C90.0	5567.9	5110.2	4666.7	4237.6	4033.8	3651.1	3474.8	3154.1	2859.4	2736.0
C120.0	6276.0	6043.5	5585.8	5117.3	4856.3	4466.5	3990.9	3790.6	3419.1	3086.5
C150.0	6050.7	5811.1	5567.9	5070.8	4827.7	4352.0	4123.2	3694.0	3302.8	3123.3
C180.0	7566.9	7162.8	6951.8	6504.8	6036.4	5782.5	5274.7	5020.8	4523.7	4455.7
C210.0	7856.6	7488.2	7087.7	6880.3	6440.4	5975.6	5728.8	5235.3	4734.7	4487.9
C240.0	7406.0	7259.4	7055.5	6633.6	6183.0	5950.5	5478.5	4960.0	4713.2	4248.3
C270.0	8131.9	7806.5	7448.9	7262.9	6880.3	6669.3	6218.7	5761.0	5546.4	5063.7
C300.0	7416.7	7323.7	7123.5	6697.9	6479.8	6025.6	5553.6	4838.4	4838.4	4377.1
C330.0	8210.6	7813.6	7409.6	7184.3	6762.3	6254.5	6254.5	5489.2	5006.5	4738.3
C360.0	7055.5	6579.9	6333.2	6079.3	5564.3	5049.4	4791.9	4302.0	4058.8	3619.0
C\G	G50.0	G51.0	G52.0	G53.0	G54.0	G55.0	G56.0	G57.0	G58.0	G59.0
C0.0	3229.5	3051.8	2597.3	2597.3	2340.9	2248.3	2055.9	1906.0	1840.6	1718.6
C30.0	2786.8	2654.1	2424.2	2233.6	2149.6	2004.4	1879.2	1823.4	1719.7	1626.0
C60.0	2968.1	2703.1	2586.9	2382.4	2211.1	2133.8	1996.9	1877.4	1822.0	1721.1
C90.0	2518.6	2332.3	2103.4	2103.4	1972.2	1912.1	1799.5	1694.3	1643.9	1596.3
C120.0	2940.9	2680.2	2460.7	2362.3	2188.2	2110.2	1969.7	1844.5	1786.9	1679.7
C150.0	2802.5	2660.2	2407.7	2093.1	2093.1	1932.1	1794.5	1731.9	1618.9	1519.1
C180.0	3819.2	3394.7	3394.7	2846.9	2688.5	2393.8	2177.5	2073.7	1887.1	1810.9
C210.0	4001.6	3779.9	3366.1	2993.5	2993.5	2525.8	2401.0	2177.8	2078.8	1902.5
C240.0	3808.5	3601.1	3223.1	3045.7	2733.2	2591.9	2342.7	2133.1	2037.6	1866.0
C270.0	4620.2	4477.2	3998.0	3575.0	3394.7	3081.5	2800.8	2656.6	2423.8	2234.0
C300.0	4162.5	3719.1	3349.3	3176.2	2869.1	2603.4	2481.4	2270.4	2086.3	2001.5
C330.0	4470.0	4470.0	3608.2	3204.8	3038.9	2718.9	2580.8	2347.7	2240.4	2049.8
C360.0	3229.5	3051.8	2597.3	2597.3	2340.9	2248.3	2055.9	1906.0	1840.6	1718.6

## Light intensity data Unit[cd]

C\G	G60.0	G61.0	G62.0	G63.0	G64.0	G65.0	G66.0	G67.0	G68.0	G69.0
C0.0	1612.1	1563.8	1474.8	1389.6	1308.1	1267.3	1187.2	1146.1	1066.7	903.7
C30.0	1580.3	1495.1	1412.9	1366.8	1284.2	1199.8	1158.3	1074.6	1031.7	905.8
C60.0	1626.7	1580.6	1535.6	1408.2	1366.4	1280.9	1238.4	1148.6	1063.9	1021.0
C90.0	1502.7	1412.5	1368.2	1279.1	1234.4	1146.8	1053.9	1011.3	882.9	882.9
C120.0	1628.9	1532.0	1435.4	1391.1	1306.0	1263.4	1177.9	1093.6	1051.0	1009.5
C150.0	1471.5	1382.9	1298.5	1257.7	1175.1	1092.8	1051.7	889.7	889.7	741.3
C180.0	1676.8	1616.7	1506.9	1412.2	1368.2	1284.2	1243.0	1161.5	1080.7	1041.3
C210.0	1756.6	1697.2	1579.5	1528.4	1425.8	1343.5	1301.0	1216.9	1169.0	1092.1
C240.0	1789.1	1652.5	1534.5	1480.5	1373.9	1327.4	1237.3	1193.3	1108.9	1025.3
C270.0	2143.1	1964.7	1888.9	1751.2	1612.4	1557.4	1499.1	1391.4	1290.2	1194.8
C300.0	1848.8	1780.9	1653.9	1538.1	1484.8	1335.7	1335.7	1241.6	1147.9	1110.0
C330.0	1893.2	1818.8	1687.9	1635.0	1531.3	1435.4	1390.0	1301.7	1254.8	1175.8
C360.0	1612.1	1563.8	1474.8	1389.6	1308.1	1267.3	1187.2	1146.1	1066.7	903.7
C\G	G70.0	G71.0	G72.0	G73.0	G74.0	G75.0	G76.0	G77.0	G78.0	G79.0
C0.0	903.7	860.8	739.5	729.2	645.1	600.4	513.9	471.3	385.5	299.5
C30.0	864.3	822.8	739.5	697.3	611.9	566.1	477.8	391.2	347.6	265.3
C60.0	1021.0	892.2	805.3	762.8	675.9	589.7	542.5	457.4	446.6	336.4
C90.0	742.4	715.9	631.9	589.3	545.0	455.2	370.1	328.0	248.5	177.6
C120.0	1009.5	844.3	762.1	721.3	636.2	595.1	506.7	448.4	448.4	296.1
C150.0	741.3	680.9	640.1	600.1	517.1	475.6	393.7	316.8	278.1	205.0
C180.0	1041.3	883.3	804.3	765.3	683.4	683.4	557.5	474.2	448.1	352.7
C210.0	1047.1	1047.1	894.0	807.8	765.6	692.3	650.5	567.5	483.8	448.8
C240.0	902.6	902.6	820.3	739.2	698.8	616.9	574.7	493.5	411.2	370.1
C270.0	1144.3	1059.9	1017.7	1017.7	887.2	806.4	719.9	682.7	596.1	554.6
C300.0	1024.9	892.6	892.6	851.1	738.8	687.0	605.1	560.0	517.1	432.0
C330.0	1091.4	1049.6	1049.6	881.9	835.4	756.0	680.9	638.3	550.7	464.9
C360.0	903.7	860.8	739.5	729.2	645.1	600.4	513.9	471.3	385.5	299.5
C\G	G80.0	G81.0	G82.0	G83.0	G84.0	G85.0	G86.0	G87.0	G88.0	G89.0
C0.0	221.6	154.1	154.1	73.1	66.5	20.1	9.8	10.1	10.7	11.4
C30.0	227.2	155.3	74.1	34.3	12.3	1.5	1.2	1.1	0.9	0.9
C60.0	257.1	219.7	149.7	117.0	59.3	46.3	1.9	1.8	1.5	1.3
C90.0	143.8	71.1	32.6	11.9	0.9	0.9	0.9	0.9	0.9	0.9
C120.0	218.7	179.4	116.8	89.4	46.2	2.8	1.7	1.6	1.5	1.3
C150.0	171.1	72.0	53.7	29.6	1.2	0.9	0.9	0.9	0.9	0.9
C180.0	273.0	273.0	199.1	134.1	76.5	49.7	6.8	1.8	1.5	1.3
C210.0	355.6	279.7	237.7	170.6	110.0	83.4	47.7	9.6	9.9	10.3
C240.0	291.2	218.4	184.4	71.3	71.3	37.5	9.3	9.6	9.7	9.9
C270.0	467.4	450.6	349.4	267.5	191.9	161.1	128.6	47.0	11.3	9.9
C300.0	348.9	309.3	231.4	160.1	128.9	73.8	29.2	16.2	9.3	10.0
C330.0	447.7	348.7	264.7	230.2	162.3	132.2	132.2	46.7	10.2	10.8
C360.0	221.6	154.1	154.1	73.1	66.5	20.1	9.8	10.1	10.7	11.4

### Light intensity data Unit[cd]

C\G	G90.0									
C0.0	12.1									
C30.0	1.0									
C60.0	1.0									
C90.0	1.0									
C120.0	1.0									
C150.0	1.0									
C180.0	1.0									
C210.0	10.4									
C240.0	10.4									
C270.0	10.3									
C300.0	10.3									
C330.0	12.1									
C360.0	12.1									

## Zonal Luminous Flux Data

Gamma [°]	I <sub>mean</sub> [cd]	Zonal Flux [lm]	Sum Flux [lm]	Zonal Flux [%]	Sum Flux [%]
0.0	12856.14	0.00	0.00	0.00	0.00
0.0-1.0	12847.22	12.30	12.30	0.05	0.05
1.0-2.0	12832.02	36.86	49.16	0.16	0.21
2.0-3.0	12812.65	61.33	110.49	0.27	0.48
3.0-4.0	12786.43	85.69	196.18	0.37	0.85
4.0-5.0	12755.44	109.88	306.06	0.48	1.33
5.0-6.0	12713.12	133.84	439.90	0.58	1.91
6.0-7.0	12657.99	157.48	597.38	0.68	2.60
7.0-8.0	12604.95	180.80	778.18	0.79	3.38
8.0-9.0	12537.00	203.76	981.94	0.89	4.27
9.0-10.0	12465.78	226.27	1208.21	0.98	5.25
10.0-11.0	12382.34	248.28	1456.49	1.08	6.33
11.0-12.0	12289.96	269.70	1726.20	1.17	7.50
12.0-13.0	12210.98	290.76	2016.96	1.26	8.77
13.0-14.0	12102.21	311.21	2328.17	1.35	10.12
14.0-15.0	11992.84	330.79	2658.96	1.44	11.56
15.0-16.0	11884.67	349.87	3008.83	1.52	13.08
16.0-17.0	11771.73	368.39	3377.22	1.60	14.68
17.0-18.0	11648.35	386.15	3763.37	1.68	16.36
18.0-19.0	11522.89	403.13	4166.50	1.75	18.11
19.0-20.0	11390.88	419.39	4585.89	1.82	19.93
20.0-21.0	11233.53	434.43	5020.32	1.89	21.82
21.0-22.0	11094.07	448.68	5469.00	1.95	23.77
22.0-23.0	10944.47	462.43	5931.43	2.01	25.78
23.0-24.0	10712.33	473.50	6404.93	2.06	27.84
24.0-25.0	10567.79	483.86	6888.79	2.10	29.94
25.0-26.0	10439.35	495.88	7384.67	2.16	32.10
26.0-27.0	10171.15	504.24	7888.91	2.19	34.29
27.0-28.0	10054.93	512.08	8400.99	2.23	36.51
28.0-29.0	9844.84	520.63	8921.62	2.26	38.78
29.0-30.0	9510.18	522.58	9444.21	2.27	41.05
30.0-31.0	9345.68	524.73	9968.94	2.28	43.33
31.0-32.0	9245.55	532.62	10501.56	2.31	45.64
32.0-33.0	9135.29	541.51	11043.06	2.35	48.00
33.0-34.0	9001.49	548.87	11591.94	2.39	50.38
34.0-35.0	8682.92	549.21	12141.15	2.39	52.77
35.0-36.0	8326.81	541.59	12682.75	2.35	55.12
36.0-37.0	8010.03	532.82	13215.56	2.32	57.44
37.0-38.0	7650.34	522.72	13738.29	2.27	59.71
38.0-39.0	7393.46	513.49	14251.77	2.23	61.94
39.0-40.0	7015.00	502.52	14754.29	2.18	64.13

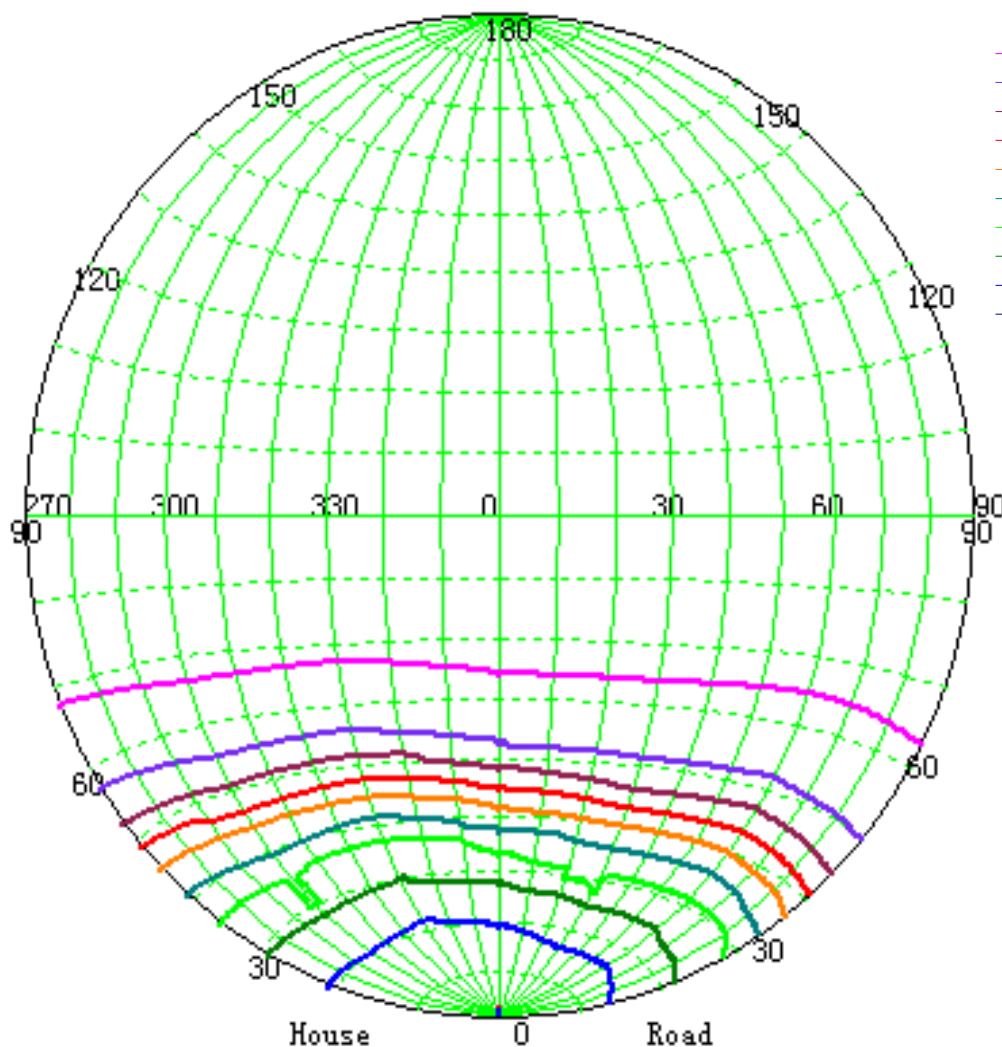
## Zonal Luminous Flux Data

Gamma [°]	I <sub>mean</sub> [cd]	Zonal Flux [lm]	Sum Flux [lm]	Zonal Flux [%]	Sum Flux [%]
40.0-41.0	6692.86	488.13	15242.42	2.12	66.25
41.0-42.0	6368.03	474.53	15716.94	2.06	68.31
42.0-43.0	5989.57	457.76	16174.71	1.99	70.30
43.0-44.0	5646.87	439.19	16613.90	1.91	72.21
44.0-45.0	5245.46	418.60	17032.50	1.82	74.03
45.0-46.0	4899.09	396.73	17429.23	1.72	75.75
46.0-47.0	4477.80	372.94	17802.17	1.62	77.37
47.0-48.0	4144.81	348.57	18150.74	1.51	78.89
48.0-49.0	3858.76	328.67	18479.41	1.43	80.32
49.0-50.0	3510.72	307.26	18786.67	1.34	81.65
50.0-51.0	3293.65	287.88	19074.55	1.25	82.90
51.0-52.0	2959.98	268.35	19342.90	1.17	84.07
52.0-53.0	2717.85	246.99	19589.89	1.07	85.14
53.0-54.0	2556.06	232.45	19822.34	1.01	86.15
54.0-55.0	2354.67	219.21	20041.54	0.95	87.11
55.0-56.0	2189.97	205.36	20246.90	0.89	88.00
56.0-57.0	2044.75	193.62	20440.52	0.84	88.84
57.0-58.0	1932.16	183.91	20624.43	0.80	89.64
58.0-59.0	1810.46	174.97	20799.40	0.76	90.40
59.0-60.0	1710.81	166.36	20965.76	0.72	91.12
60.0-61.0	1624.80	159.18	21124.94	0.69	91.82
61.0-62.0	1531.41	152.09	21277.03	0.66	92.48
62.0-63.0	1453.15	145.15	21422.18	0.63	93.11
63.0-64.0	1372.54	138.66	21560.84	0.60	93.71
64.0-65.0	1294.56	131.99	21692.83	0.57	94.28
65.0-66.0	1239.46	126.43	21819.27	0.55	94.83
66.0-67.0	1155.87	120.44	21939.71	0.52	95.36
67.0-68.0	1086.46	113.59	22053.30	0.49	95.85
68.0-69.0	1008.62	106.88	22160.18	0.46	96.31
69.0-70.0	961.15	101.16	22261.35	0.44	96.75
70.0-71.0	887.66	95.56	22356.90	0.42	97.17
71.0-72.0	816.41	88.61	22445.51	0.39	97.55
72.0-73.0	763.57	82.62	22528.13	0.36	97.91
73.0-74.0	686.69	76.24	22604.37	0.33	98.25
74.0-75.0	627.00	69.41	22673.78	0.30	98.55
75.0-76.0	549.43	62.45	22736.23	0.27	98.82
76.0-77.0	485.78	55.19	22791.42	0.24	99.06
77.0-78.0	430.16	49.03	22840.46	0.21	99.27
78.0-79.0	350.25	41.93	22882.39	0.18	99.45
79.0-80.0	285.28	34.26	22916.66	0.15	99.60
80.0-81.0	227.60	27.74	22944.39	0.12	99.72



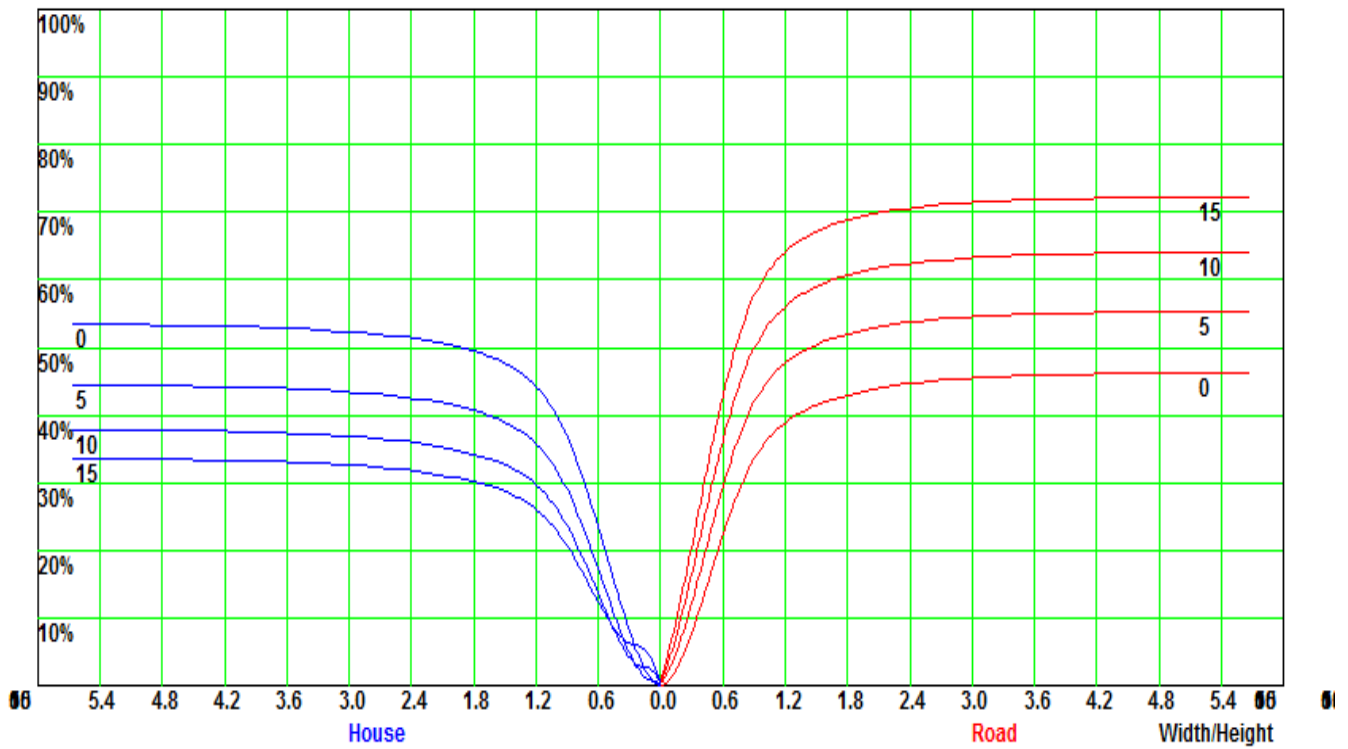


### Iso-Candela [cd]

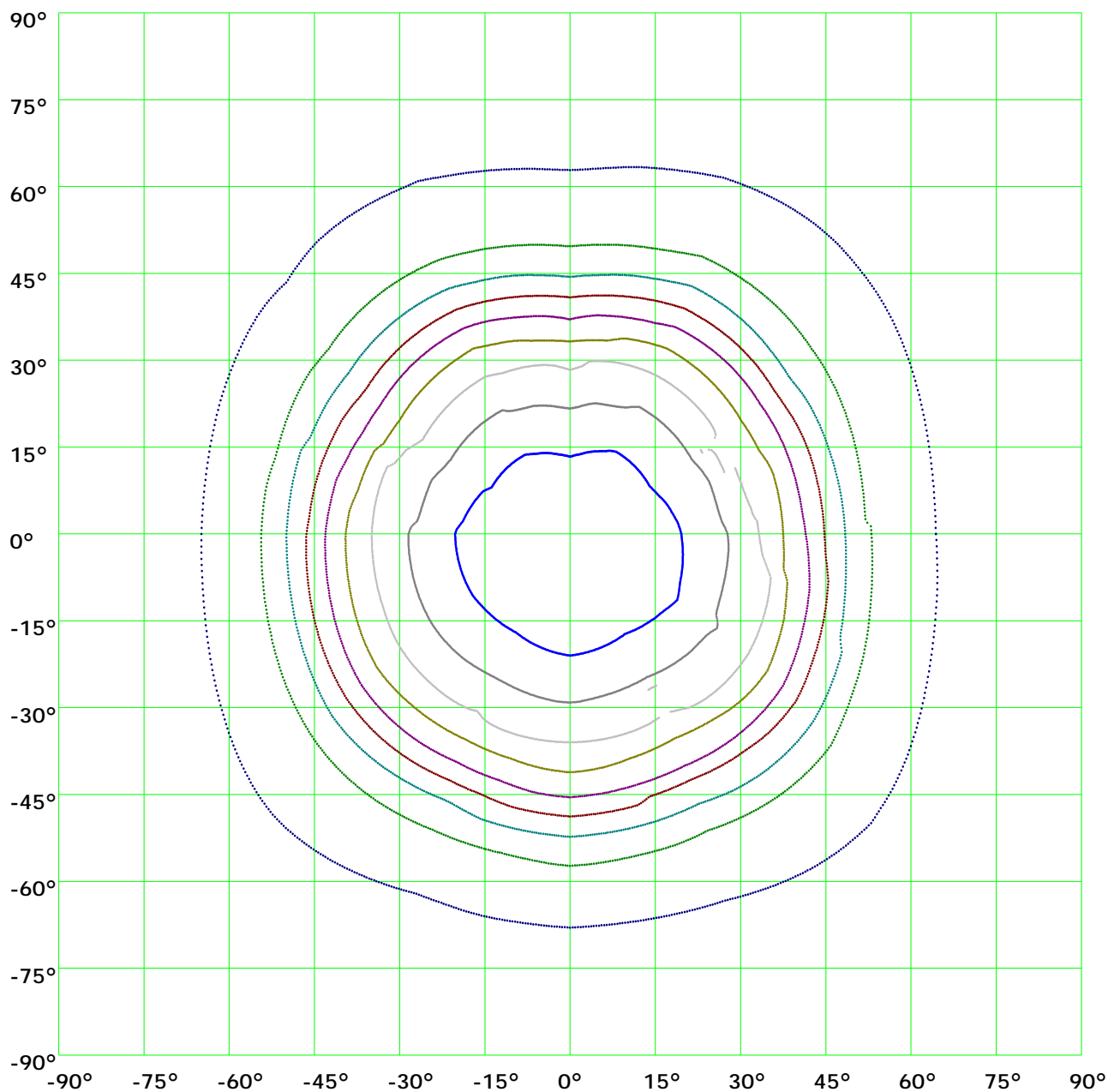


- (10%): 11.69365 cd
- (20%): 11.04996 cd
- (30%): 10.40628 cd
- (40%): 9.619548 cd
- (50%): 9.297704 cd
- (60%): 8.797058 cd
- (70%): 23.0297 cd
- (80%): 45.73755 cd
- (90%): 71.94993 cd
- (100%): 160.4212 cd

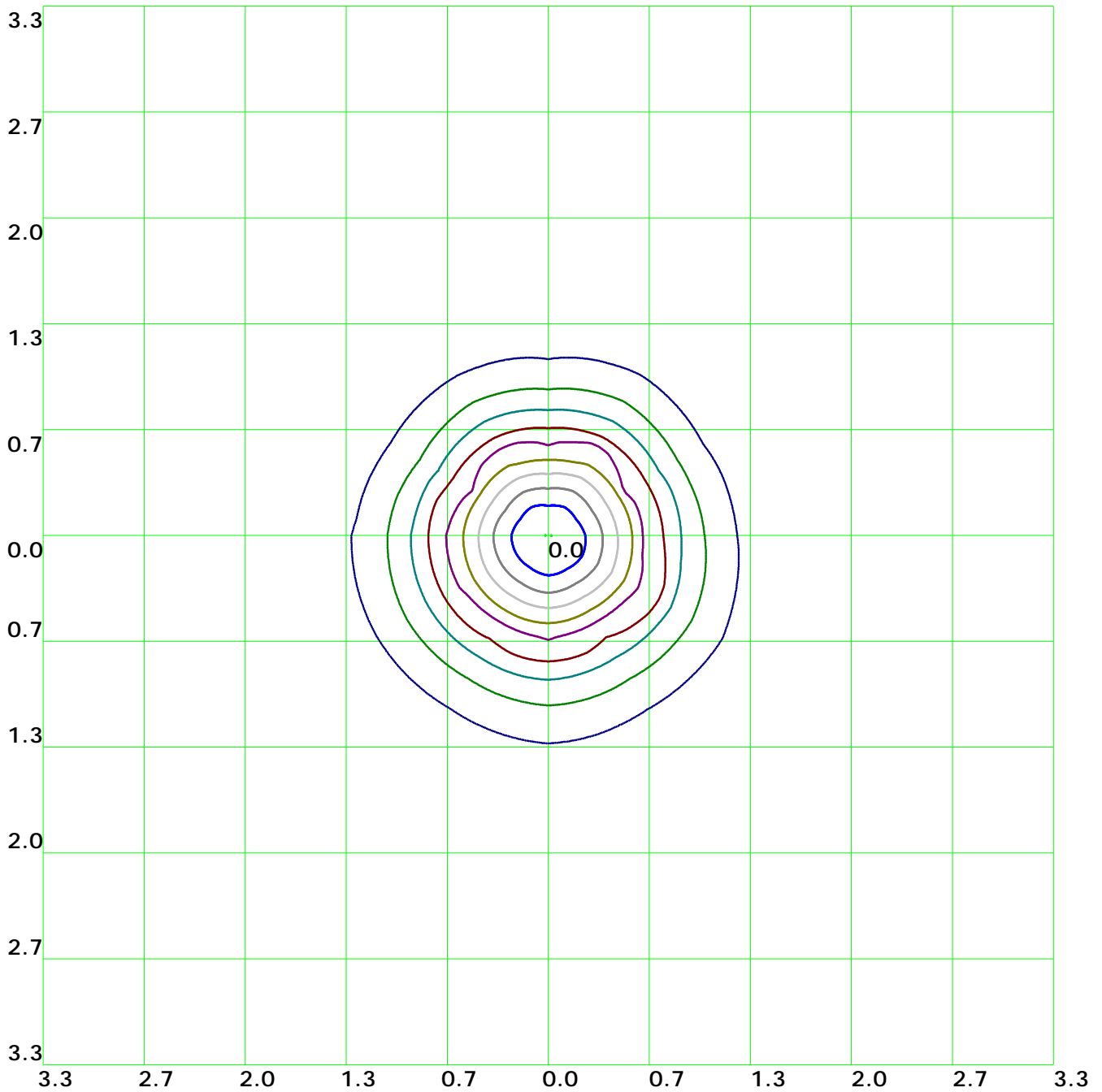
## Coefficient Utilization Curve



## Isocandela(rectangle)



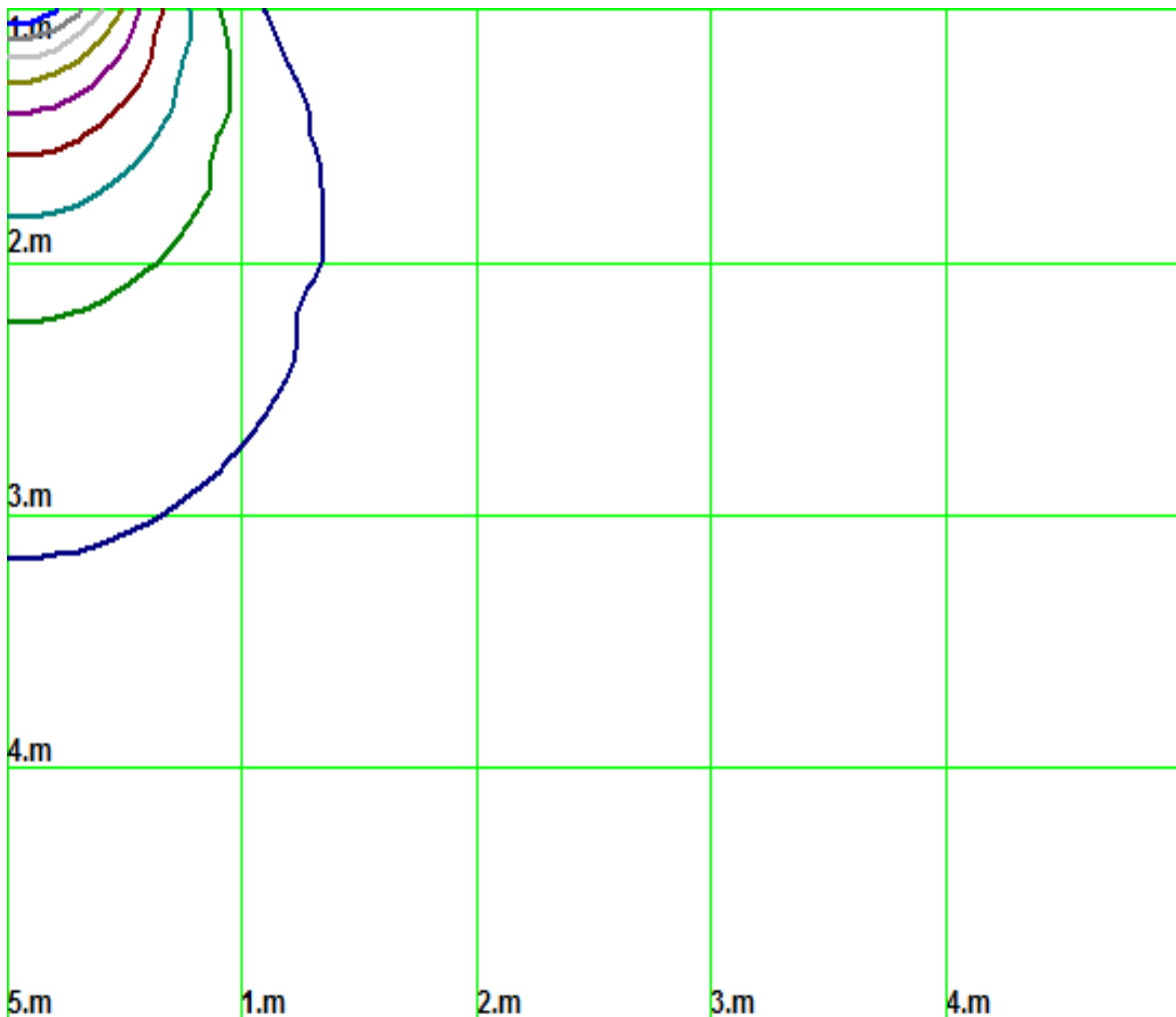
### Isolx curve



Height: 1 m

- (10%): 1292.7lx    — (20%): 2585.5lx    — (30%): 3878.2lx    — (40%): 5171.lx
- (50%): 6463.7lx    — (60%): 7756.4lx    — (70%): 9049.2lx    — (80%): 10341.9lx
- (90%): 11634.7lx    — (100%): 12914.5lx

## Space Isolx Curve



(10%): 1292.7lx    (20%): 2585.5lx    (30%): 3878.2lx    (40%): 5171.1lx  
 (50%): 6463.7lx    (60%): 7756.4lx    (70%): 9049.2lx    (80%): 10341.9lx  
 (90%): 11634.7lx    (100%): 12914.5lx

### Luminance Limiting Curve

Diameter: 0mm

Length: 0mm

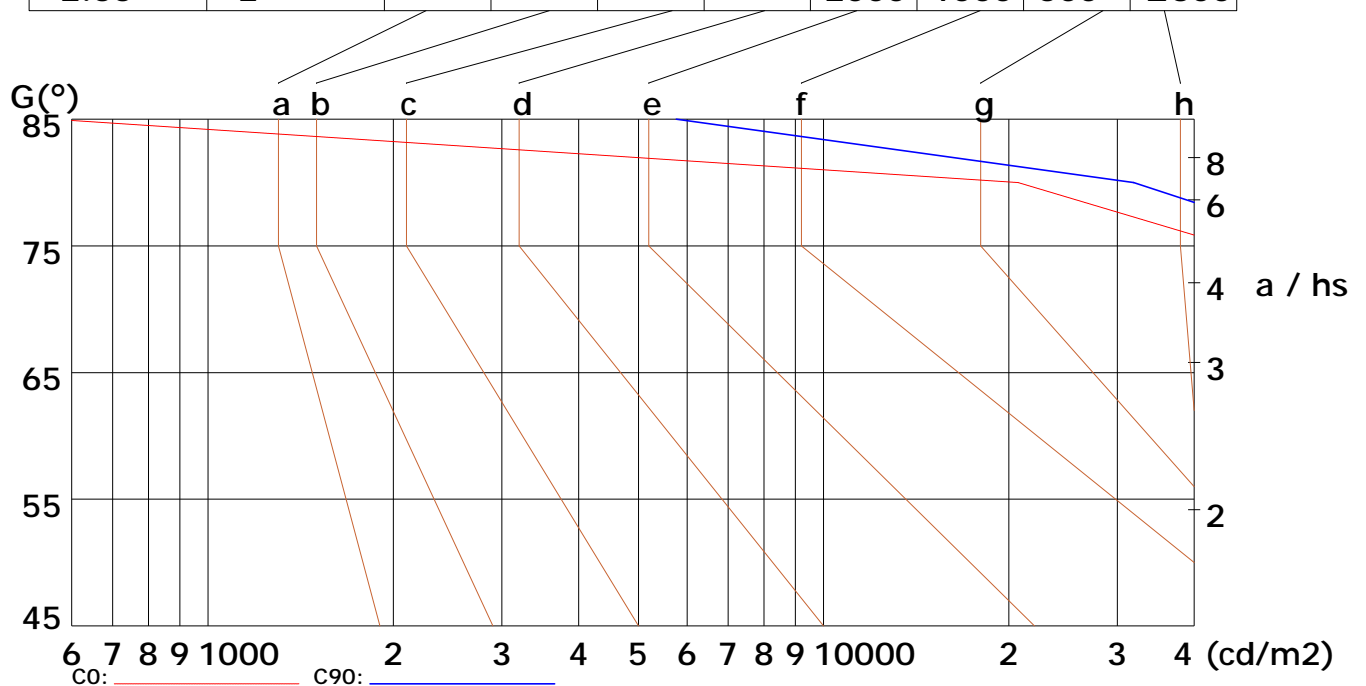
Width: 0mm

Height: 0mm

(cd/m<sup>2</sup>)

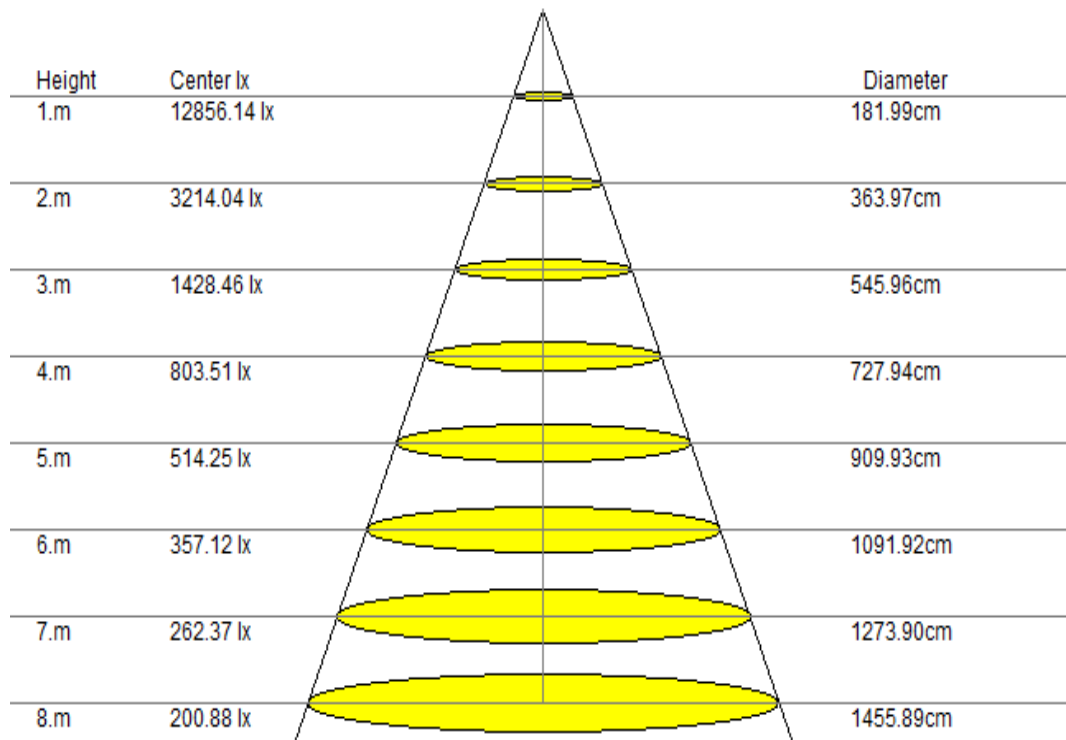
$\gamma$	45°	50°	55°	60°	65°	70°	75°	80°	85°
C0	12908	77956	83341	75133	67841	54265	43972	20707	246
C90	17852	212560	97993	80604	74970	66054	57996	31910	5765

Glare	Quality	Service Values Illuminance (lx)									
1.15	A	2000	1000	500	≤300						
1.5	B		2000	1000	500	≤300					
1.85	C			2000	1000	500	≤300				
2.2	D				2000	1000	500	≤300			
2.55	E					2000	1000	500	≤300		



Lum. Limiting Curve (C0/C90)

## Lux-Distance Curve



Beam Angle: 84.60°(50%Imax)

### Coefficients of Utilization

RHOCC	80			70			50			30			10			0
RHOW	50	30	10	50	30	10	50	30	10	50	30	10	50	30	10	0
RCR	COEFFICIENTS OF UTILIZATION FOR RHOFC=20															
0	1.19	1.19	1.19	1.16	1.16	1.16	1.11	1.11	1.11	1.06	1.06	1.06	1.02	1.02	1.02	1.00
1	1.09	1.08	1.07	1.08	1.06	1.05	1.04	1.02	1.01	0.99	0.97	0.95	0.92	0.90	0.88	0.83
2	0.97	0.95	0.94	0.96	0.94	0.92	0.93	0.90	0.88	0.89	0.86	0.83	0.84	0.81	0.78	0.73
3	0.86	0.84	0.82	0.86	0.83	0.81	0.84	0.80	0.77	0.81	0.77	0.73	0.77	0.72	0.69	0.64
4	0.77	0.75	0.73	0.77	0.74	0.72	0.75	0.71	0.69	0.73	0.69	0.65	0.70	0.65	0.61	0.57
5	0.69	0.67	0.65	0.69	0.66	0.64	0.68	0.64	0.61	0.67	0.62	0.58	0.65	0.59	0.55	0.51
6	0.63	0.60	0.59	0.63	0.60	0.58	0.62	0.58	0.55	0.61	0.56	0.52	0.60	0.54	0.49	0.46
7	0.57	0.55	0.53	0.57	0.54	0.52	0.57	0.53	0.50	0.57	0.51	0.47	0.55	0.49	0.45	0.41
8	0.52	0.50	0.48	0.52	0.49	0.47	0.53	0.48	0.45	0.52	0.47	0.43	0.52	0.45	0.41	0.38
9	0.48	0.45	0.44	0.48	0.45	0.43	0.48	0.44	0.41	0.48	0.43	0.39	0.48	0.42	0.38	0.34
10	0.44	0.42	0.41	0.44	0.41	0.40	0.45	0.41	0.38	0.45	0.40	0.36	0.45	0.39	0.35	0.32



## Indoor Budgetary Estimate Chart

